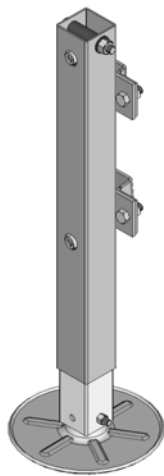


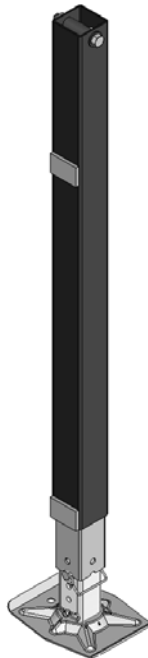


**SPECIFICATIONS FOR LCI HYDRAULIC LANDING GEAR (HLG)**



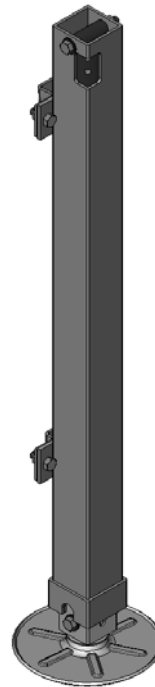
**REAR STABILIZER JACK**

Capacity Rating	7,000 lb. per set of 2
Max. Cylinder Stroke	12"
Adjustable Footpad	Yes



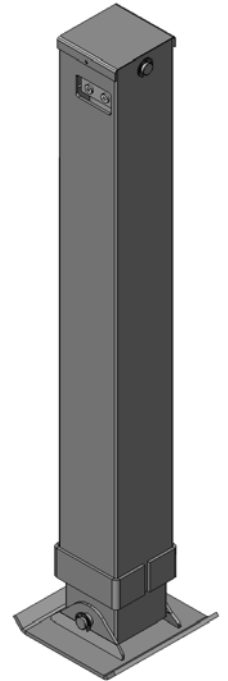
**STANDARD HLG**

Capacity Rating	7,000 lb. per set of 2
Max. Cylinder Stroke	12"
Adjustable Footpad	Yes



**PINLESS HLG**

Capacity Rating	7,000 lb. per set of 2
Max. Cylinder Stroke	26"
Adjustable Footpad	Yes



**HEAVY DUTY HLG**

Capacity Rating	13,000 lb. per set of 2
Max. Cylinder Stroke	27"
Adjustable Footpad	No

**WARNING!**

**DO NOT EXCEED CAPACITY RATING OF THE HYDRAULIC LANDING GEAR!**

**WARNING!**

**DO NOT LIFT UNIT WITH REAR STABILIZING JACKS!**

Rear Stabilizer Jacks have the same capacity rating as the Standard HLG; however, the Rear Stabilizer Jack is designed as a "stabilizing" jack and not a "lifting" jack. Lifting the unit with the Rear Stabilizing Jacks may result in damage to the unit, serious personal injury or death.

**WARNING!**

Switches and/or controls may be located near HLG. HLG operator must be clear of HLG and all moving parts during operation of HLG. Contact with HLG during operation or moving parts may cause serious personal injury.

**WARNING!**

Serious damage to the trailer frame may occur if HLG in operated unevenly. The HLG operates as a set of two (2) legs and should operate simultaneously keeping the front of the trailer horizontal at all times. Should the HLG not operate simultaneously, STOP operation immediately, retract the HLG and call:

Lippert Components - Service and Warranty Dept.

**Toll free - (866) 524-7821.**